

WHAT'S NEW IN BUSINESSOBJECTS XI – ALL RELEASES

BusinessObjects XI Release 2
BusinessObjects XI Release 2 builds on the world's leading business intelligence platform, BusinessObjects XI.

BusinessObjects XI Release 2 delivers improved simplicity for end users, increased trust in data, and the opportunity to standardize on a single BI platform.

INTRODUCTION

BusinessObjects™ XI from Business Objects, an SAP company, is the first and only business intelligence (BI) platform to deliver a complete set of market-leading, end-to-end BI capabilities – best-in-class enterprise performance management (EPM), dashboards and visualization, reporting, query and analysis, and enterprise information management (EIM). BusinessObjects XI introduces significant innovations that deliver BI in new ways to a much broader set of users. The platform includes Crystal Reports®, the industry standard for enterprise reporting.

Built upon the proven and trusted BusinessObjects XI platform (introduced in December 2004), BusinessObjects XI Release 2 (October 2005) provided substantial functional improvements and innovations across the BusinessObjects XI platform. Release 2 included full platform-level support for BusinessObjects Desktop Intelligence™ (formerly BusinessObjects full client) to allow all existing customers a smooth transition path to BusinessObjects XI.

BusinessObjects XI Release 2 Productivity Suite (marked “PS” below), the latest version, further extends the breadth of the XI platform. For details on the dashboards and visualization, reporting, query and analysis, and BI platform parts of Productivity Suite, please see “What’s New: BusinessObjects XI Release 2 Productivity Pack” on www.businessobjects.com.

What’s new in BusinessObjects XI depends on where you’re coming from – Business Objects 5.x or 6.x, Crystal Version 10, or both. For that reason, this document contains three sections:

- New for all users
- New for users of BusinessObjects 5.x/6.x
- New for users of Crystal Version 10

NEW FOR ALL USERS

Business Intelligence Platform Search

PS

In May 2006, Business Objects delivered the first of a series of new innovative capabilities to bring the simplicity of search to the world of BI. The first deliverable allowed joint Google and Business Objects users to search using the familiar Google interface and retrieve, index, and deliver BI content, presentations, business content in documents and Web pages.

In this release, an additional set of capabilities further advances the concept of search-based BI, reducing the time and effort to find specific data or reports to answer business questions. This is delivered from directly within the BI portal InfoView. Simply by entering text into the search box within InfoView, your users quickly see a relevant, categorized, and ranked set of results from within their BusinessObjects XI system.

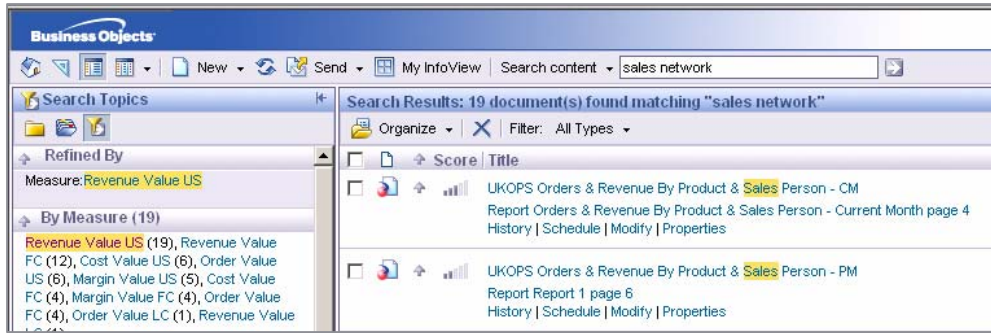


Figure 1: Quickly Find Reports and Metrics, with Scoring and Categories Created Automatically

Key capabilities include:

- Relevance-based document ranking based on frequency and position of use of the user's search string.
- Intelligent categorization of documents by topic (for example, sales, product, region) and type (BusinessObjects Web Intelligence®, Crystal Reports, and so on) based on the Business Objects advanced semantics.
- Step-by-step refining of results, based on a user selecting autogenerated subsets. For example, a search for "Sales" may return 200 documents, which would then be refined to 50 documents by selecting "Revenue Value," then further refined to six documents by selecting "Electronics Division."

Additionally, this release introduces innovative new capabilities to allow users to generate reports automatically from their search criteria, enabling users to quickly and easily answer questions, even when the BI content doesn't already appear in an existing report.

BusinessObjects Voyager

PS

BusinessObjects Voyager is designed to address the specialist needs of analysts, while building on the XI platform. Typically, these users spend a great deal of time analyzing and exploring information, requiring fast data access to large multidimensional data sources, and the creation of complex business calculations.

To meet end-user demands for rich-client feel, and to conform to the deployment standards of IT, Voyager has been designed to provide rapid drag-and-drop response over the Web in a zero-client format. This, coupled with a focus on usability, makes product adoption much easier.

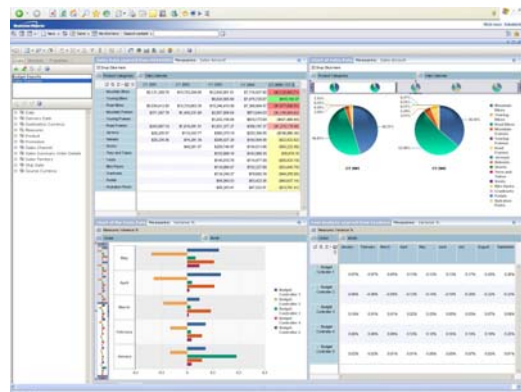


Figure 2: Explore Data Inside OLAP Servers Through a Powerful Web Client

Key features include:

- A workspace that meets the highly focused requirements of analysts, allowing them to quickly and easily get answers to their questions.
- The ability to access multiple online analytical processing (OLAP) cubes from within the workspace and on individual pages (for example, data from both Hyperion Essbase and Microsoft Analysis Services).
- The ability to have multiple, different views of the same OLAP data source. Voyager provides up to four views in a single page, giving analysts the full range of information required to answer their questions.
- The ability to dynamically create time-based calculations, such as year-to-date.

- Up-to-date OLAP server support including Microsoft SQL Server Analysis Services 2005 and Oracle OLAP 10g (coming soon).

BusinessObjects Xcelsius Enterprise

PS

Xcelsius® Enterprise provides secure, interactive visualizations with live, refreshable data from BusinessObjects Enterprise, Excel spreadsheets, or corporate databases. These dashboards and visual models enable effective decision making while providing a live view into your business from BusinessObjects Dashboard Builder, InfoView, Microsoft Office, SharePoint, Adobe PDF, or the Web.

Xcelsius Enterprise dashboards provide more than just a view into historical activity. With the unique feature of what-if analysis, you can interact with your information to gain deeper insight and make meaningful decisions based on analytic analysis.

Xcelsius Enterprise provides:

- The ability to leverage secure and personalized information delivered in desktop applications
- More effective decision-making with simple, interactive analytics
- Interactivity with scenario analysis for advanced evaluations and in-meeting collaboration
- The power of innovative design with point-and-click ease
- A revolutionary approach to building corporate dashboards with quick deployments for end-user validation



Figure 3: Create Interactive Visualizations from Corporate Data, and Access via BusinessObjects Enterprise

BusinessObjects Desktop Intelligence

BusinessObjects XI Release 2 includes BusinessObjects Desktop Intelligence™ – the new name for the BusinessObjects full client. By using Desktop Intelligence, customers can protect their existing investment and benefit from the latest trusted and proven BusinessObjects XI platform.

Desktop Intelligence is available in all of the current BusinessObjects full-client deployment options, including:

- Offline mode (no connection to a network server)
- Client/server mode
- Three-tier mode
- Workgroup mode

Note when deployed in three-tier mode, the ability for end users to automatically download and install Desktop Intelligence is not supported in BusinessObjects XI Release 2.

Desktop Intelligence has been enhanced to allow query and display of Unicode data. This provides organizations with the ability to further reduce the cost of ownership of delivery BI to multilingual audiences.

BusinessObjects
XI
Release 2

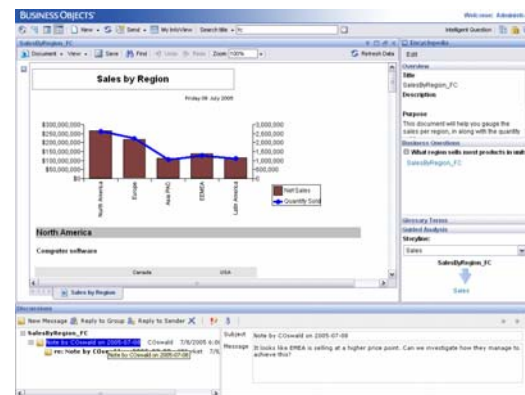


Figure 4: BusinessObjects Desktop Intelligence Documents Benefit from Full Portal Support Such as Encyclopedia and Discussions

PS

BUSINESSOBJECTS LIVE OFFICE

In this release, Live Office has been enhanced to make the process of accessing trusted data within Microsoft Office even simpler. Users can now create new queries directly from within Office documents, with the addition of a query panel that uses the patented semantic layer from Business Objects. This can further reduce the time and resources spent adding trusted data into presentations and documents, where no Web Intelligence or Crystal report exists to meet the requirement.

This release also includes the ability to add secure, refreshable tables and charts from Web Intelligence documents (known as "report parts"). Live Office supports the full range of currently-supported Microsoft Office versions (2000, XP, and 2003), not just the latest release. Support for Microsoft Office 2007 will be added shortly. This means users can access secure and trusted information directly in the tools they use every day, no matter which version of Office they are using.

Finally, this release enables organizations to use Live Office in an extranet deployment, enabling them to make available secure, trusted BI to users outside their firewall. This, along with a reduction in the size of the Live Office add-in, is made possible by the use of a Web services-based architecture.

BusinessObjects Enterprise

BusinessObjects XI, the scalable and adaptive service-oriented platform, helps organizations confidently deploy and standardize their BI implementations and deliver information in multiple Web and non-Web user interfaces. Handling Crystal Reports, Web Intelligence, Desktop Intelligence, Voyager, Live Office, Dashboard Builder, or BusinessObjects Performance Manager, this BI platform allows you to extend BI insight to greater numbers than ever with proven scalability. Customers who have invested in these products can also leverage their current product investments, while gaining access to the broadest set of BI tools on the market.

New features include:

- Extensive BI search capabilities (see above for details)
- Query as a Web Service (see below for details)
- Support for Crystal Reports, Web Intelligence, Desktop Intelligence, Voyager, Live Office, Dashboard Builder, and Performance Manager
- Support for Auditing, Publishing, and Crystal Reports Explorer
- Single repository, security, system management, publishing, portal, and portal integration environment
- Integrated scheduling based on user input, events, and calendars
- Full cross-platform support for all leading platforms, Web servers, application servers to fit virtually any customer deployment scenario
- Auditing of all system interactions
- Support for Encyclopedia, Process Tracker, and Discussions – all components of the XI platform

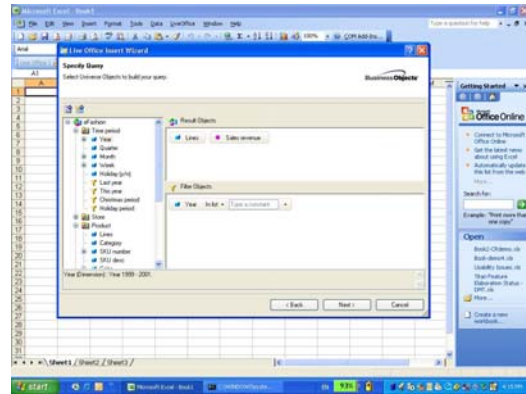


Figure 5: Provide Simple and Secure Access to Information from Any Version of Microsoft Office



Query as a Web Service

Query as a Web Service is a new wizard-based application that makes it easy for users to quickly create queries, publish them as Web services, and deliver trusted information inside and outside your firewall. With Query as a Web Service, you don't need programming knowledge. Instead, you use a simple four-step wizard to create queries based on Business Objects universes – and then publish the results as BI Web services ready for consumption. Any Web service-enabled application can consume the results simply by invoking the published Web service.



Figure 6: Deliver Trusted Information to Xcelsius or Any Other Application that Can Consume Web Services

Query as a Web Service provides the following key benefits:

- **Drives additional value from existing universes.** You can leverage your existing BI metadata investment by exposing query results via Web services to new business audiences.
- **Simple to use and quick to deploy.** Build queries and make trusted information available to thousands of users as Web services – using a simple wizard-based publishing process.
- **Interact with trusted information wherever it is required.** Deliver secure BI to Xcelsius – or to any application that consumes Web services and allow users to interact with the information.



Publishing

BusinessObjects XI provides the ability to automatically distribute BI content to end users both inside and outside the organization. It also offers the capability to distribute a single report to different users, at different times, with different data views, and send it to email, a printer, the Web, an InfoView inbox, or a file server. Two styles of publishing are supported: multi- and single-pass bursting. Multi-pass bursting is available for Crystal Reports, Desktop Intelligence, and Web Intelligence documents. Single-pass bursting is available for Desktop Intelligence documents.

Discussions

Discussions provide threaded notes on a specific report, document, or dashboard. Users can create and maintain comments on documents and to share that valuable insight across the organization, providing a greater understanding of the context of existing documents.

Process Tracker

Process Tracker is designed to align BI with an organization's business processes. It allows an organization to visually map, track, and communicate standardized business processes through a set of activities (steps) and their associated business content for more consistent and proactive decision making. Process Tracker helps users consistently follow a business process, such as Sarbanes-Oxley review or a vendor performance analysis. With each step in a business process, users can link associated BI content for easy access to the key information they need to make informed decisions. Accountability can be assigned to

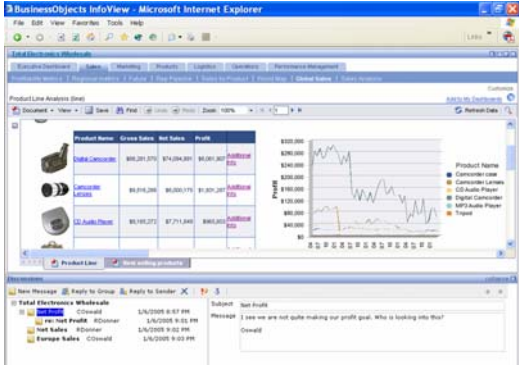


Figure 7: Threaded Discussions Provide Greater Business Insight

responsible owners for each milestone in a business process. Plus project stakeholders can add comments to each stage for timely collaboration.

Encyclopedia

Encyclopedia is a key new innovation in BusinessObjects XI for creating reference guides for BI content. It provides end users with a faster way to locate and interpret their corporate information for confident, accurate decision-making. With Encyclopedia, end users can deliver handy BI reference guides right from their BI portal for instant access to the underlying context. Visual maps show relationships between BI documents making it easy to locate relevant information. An overview panel explains the purpose of a document, what business questions it helps answer, and how it is best used. In addition, a glossary of synonyms and definitions explains the key terms used for consistent interpretation.

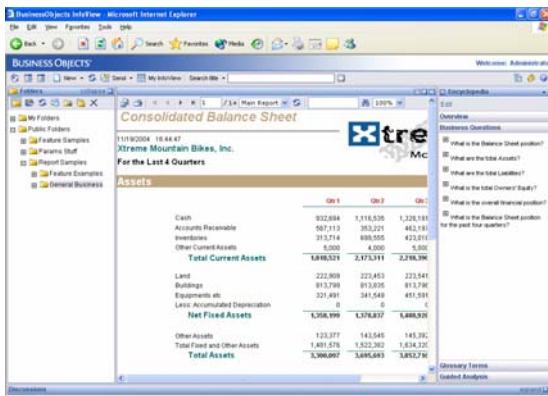


Figure 8: Encyclopedia Brings Business Context to Information – Here, a List of Business Questions Is Provided to Help the User Understand How to Use the Document.

InfoView

BusinessObjects Enterprise XI includes an all-new BI portal called InfoView. With its single Web interface, InfoView can access and interact with any type of BI content including reports, analytics, dashboards, scorecards, and strategy maps. InfoView provides a consistent user interface for both Java and .NET platforms. InfoView replaces both the previous BusinessObjects InfoView and the Crystal Enterprise™ ePortfolio product.

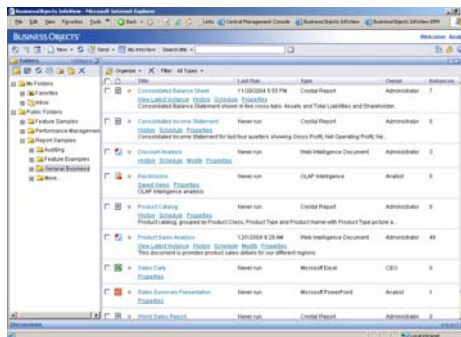


Figure 9: Easy Document Navigation Inside the InfoView Portal via Folders

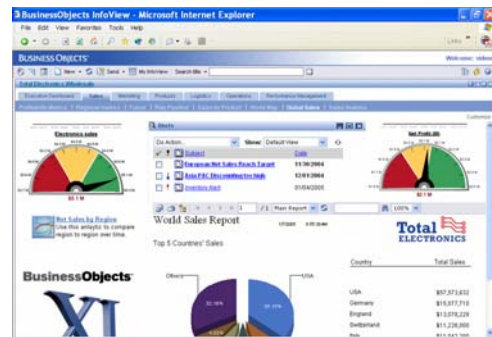


Figure 10: Access Your Dashboard From Inside InfoView

Central Management Console

Included with BusinessObjects Enterprise, the central management console (CMC) is a fully .NET or Java Web-based environment for managing, deploying, and configuring the entire infrastructure. The CMC is a tool for BI administrators to easily access and configure the system and overall user experience. The CMC manages the following system elements:

- User and group creation and management
- User interface settings and preferences
- Authentication
- Services/server configuration
- Server groups (clusters)
- Object rights, processing, scheduling, and security
- Business calendars
- License keys
- Categories
- Universes and data connections

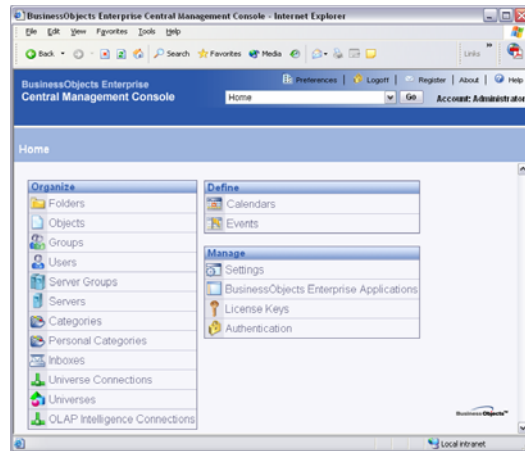


Figure 11: Manage, Administer, and Configure Your BI Deployment via the Web-Based CMC

BusinessObjects



Lifecycle Management

In BusinessObjects XI Release 2, we have introduced tools to automate the movement between development, test, and production environments. These tools support the movement of all report types and dependencies (folders, categories, security, universes, and so on) between the different parts of the deployment lifecycle, helping to reduced system management and implementation costs.

BusinessObjects



Auditing

BusinessObjects XI Release 2 also introduces enhanced system auditing. Improvements include a new sample audit universe to allow custom analysis, and twenty-eight new sample audit reports covering the following areas: user activity, session data, and system use.

Data Integrator

BusinessObjects Data Integrator XI is an integrated part of the BusinessObjects XI platform. The key enhancements for Data Integrator XI are in three areas:

- Trusted information
- Maximum productivity
- Extreme extraction, transformation, and load (ETL) scalability

New features include:

- Data validation to ensure that only correct data is loaded into the data warehouse
- Data auditing to allow developers to monitor and manage data quality and the entire ETL process
- Tools for multi-user development and better change management updates
- Impact analysis for Crystal Reports

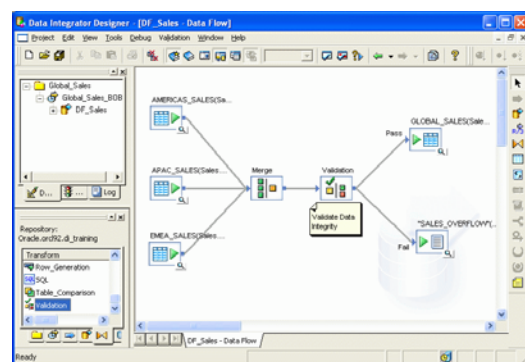


Figure 12: Ensure Data Warehouse Accuracy and Integrity with Data Integrator XI Validation and Auditing

BusinessObjects



BusinessObjects Data Integrator XI Release 2 delivered tight integration with the BI platform and provided enterprise-class ETL capabilities.

Key development themes were:

- Deeper integration with BusinessObjects Enterprise
- New and enhanced metadata management and data profiling
- Innovative ways to drive developer productivity

Integration between Data Integrator and BusinessObjects Enterprise helps accelerate BI implementations, reduce risks, and lower total cost of ownership. Some of the integration features include the ability to view ETL metadata in the BI design environments and end-user reports.

BusinessObjects Data Integrator XI Release 2 introduced new and innovative ways to manage metadata across the BI platform. Enhanced metadata reports for impact analysis make change management even easier for an end-to-end implementation. And the ability to include more attributes and support multi-object relationships when performing data profiling within the design environment helps ensure customers are always working with the right data.

PS

BusinessObjects Data Integrator XI Release 2 Advanced (part of Productivity Suite) further enhances the enterprise strength of Data Integrator in a number of ways:

- Enhanced use of memory, allowing greater than 2GB of memory per process
- Persistent caching, allowing cache memory to be reused for a set period of time (for example, using currency conversions for price and discount calculations)
- The ability to split a single data flow into multiple subprocesses to make better use of memory and processing power
- Grid computing extended to individual components of a job, allowing you to deploy many smaller-sized servers working in parallel on a single job
- Tight integration with Data Quality (below), including access to data quality data flows directly from Data Integrator, and the ability to share data quality standards and business rules between the two
- The ability to leverage the powerful scheduler inside BusinessObjects Enterprise for scheduling data integration jobs

BusinessObjects Data Federator

BusinessObjects Data Federator provides federated query capabilities that can accelerate BI deployment performance, provide agile and rapid data integration, and enable real-time delivery of trusted information. Data Federator creates a virtual view of all data sources. It allows a single Business Objects universe or Crystal Reports to map to multiple-sources and optimally federates (that is, integrates) queries against individual sources directly.

BusinessObjects Data Quality

BusinessObjects Data Quality is the industry's most advanced enterprise data quality solution, offering centralized data quality services through a service-oriented architecture. It offers powerful data parsing, cleansing, standardization, matching, and consolidation capabilities to ensure that users can build a data quality solution that meets any business need.

BusinessObjects Data Insight

BusinessObjects Data Insight is a data assessment technology that allows organizations to monitor, analyze, and report on the quality of information, helping customers make informed decisions and get optimum value from critical enterprise applications through discovery analysis, redundancy profiling, drill-down frequency distributions, cross-database, cross-column and cross-table comparisons, pattern recognition, format tests, and analysis.



BusinessObjects Composer

BusinessObjects Composer is the only product in the market that helps organizations efficiently design bulletproof data integration processes. Through an intuitive Web-based user interface, developers and IT professionals can easily manage the design phase of a BI deployment. Collaborate with a team to gather business requirements, profile source data, build mappings, validate the accuracy of your design, generate data integration jobs, and document their project.

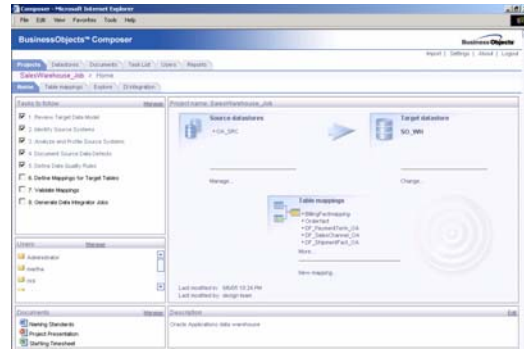


Figure 13: Accelerate Data Integration Design and Improve Data Quality with BusinessObjects Composer



BusinessObjects Metadata Manager

BusinessObjects Metadata Manager collects and unifies BI, ETL, and third-party metadata. Organizations can easily view and analyze metadata through a Web interface and pre-built metadata reports. These reports provide information on data usage, end-to-end change impact analysis, and report-to-source data lineage. With Metadata Manager, organizations can deliver trusted data for compliance requirements, internal controls, and improved decision-making.

Update and Migration

Business Objects recognizes the need to minimize the cost and risk for customers adopting the BusinessObjects XI platform. Business Objects provides a range of tools, documentation, best-practice training, and tailored services via our consultants or certified partners to make this transition as smooth as possible.



The automated Import Wizard available with BusinessObjects XI has been enhanced in BusinessObjects XI Release 2. It enables the easy update of all supported customers to the BusinessObjects XI platform by automating the movement of repositories deployed in previous versions to the BusinessObjects XI platform. This import includes the following components:

- Documents
- Universes
- Users and security profiles
- Groups and categories

While this process is designed to help automate migration tasks, Business Objects recommends trained staff or consultants from our professional services organization or certified partners be involved in any upgrades to a newer platform.

The Import Wizard in BusinessObjects XI Release 2 supports upgrades from:

- BusinessObjects 5.1.4 and above
- BusinessObjects 6.0, 6.1, and 6.5
- Crystal Enterprise 8.5, 9, and 10
- Application Foundation 6.1.b, 6.1.3, 6.5.1
- BusinessObjects XI (Release 1)



Performance Management: Planning, Budgeting, Forecasting, and Consolidations

Now within our performance management products BusinessObjects XI Release 2 introduces new applications for planning, budgeting, forecasting, and consolidations. Built by financial professionals for financial professionals, the Business Objects planning products offer unprecedented flexibility to support virtually any type of forward-looking planning needs for the organization. Key features include:

- User-friendly Excel-based templates
- Financial, staff, and capital planning needs
- Real-time consolidations across any hierarchy
- Online commenting
- Process control and workflow management
- Strong “what if” scenario and business rule modeling
- Multiple end-user access methods: Web, windows client, offline
- Prebuilt best practice solutions for many industries



Figure 14: Powerful Planning Capabilities Are Now Available Within Excel and on the Web

Because our planning products are tightly integrated with Dashboard Builder and Performance Manager, you can quickly view your plan information via easy-to-use dashboards and reports, and launch a planning session directly from the BusinessObjects XI platform.

NEW FOR USERS OF BUSINESSOBJECTS 5.X/6.X

BusinessObjects Enterprise

BusinessObjects Enterprise is our single BI platform based extensively on the proven Crystal Enterprise Version 10 architecture. It is based on modern Web standards with an industry-based communication framework that ties all the components and services together. It has been recognized as a highly scalable, reliable, and powerful platform in tens of thousands of customer deployments in production since its inception.

Scheduling

Scheduling in BusinessObjects XI is flexible, scalable, and fault tolerant. Incorporated into the central management server (CMS), scheduling requires little to no additional configuration beyond setting up access to email servers, printers, and file servers to get started.

There are many options available for scheduling including scheduling based on a specified time, a recurring schedule, or even a predefined business calendar. Depending on the objects type and the abilities of the processing servers, the scheduler can schedule to different formats including Excel, PSF, Word, and text and to different destinations including email, printer, or file server.

The Semantic Layer

BusinessObjects XI Release 2 brings a number of improvements to the Business Objects universes, with the objective of meeting the requirements of the specialized end-user client tools.

The ability to build universes upon OLAP data sources helps organizations leverage their data stored in OLAP servers and easily standardize on BusinessObjects XI for all of their BI requirements. OLAP-based universes are available with BusinessObjects XI for SAP BW. With BusinessObjects XI Release 2, it has been extended to Essbase and Microsoft Analysis



Services. Note also that BusinessObjects Web Intelligence can access Oracle OLAP via SQL by using the Oracle metadata bridge with BusinessObjects XI.

The metadata bridge functionality available in previous versions of the Universal Metadata Bridge has been integrated into the Universe Designer in BusinessObjects XI Release 2. Additionally it supports the Common Warehousing Metamodel (CWM) version 1.1. This functionality is also extended to include the lineage and impact analysis of Data Integrator.

Other universe design enhancements in BusinessObjects XI Release 2 include:

- Support for Unicode, which gives you the ability to work with tables in different languages in the same universe
- The ability for prompted reports to take advantage of the index awareness functionality available in most databases
- The ability to create cascading prompts within the Universe Designer interface
- Enhancement of the SQL created using the semantic layer to include server side data ranking and the ability to delegate query splits to the database
- Improved universe security management with more intuitive workflows and the ability to combine rows restrictions with AND or OR operators

Business Views

Business Views are designed to simplify the report creation, modification, and interaction experience by abstracting the complexity of data for Crystal Reports developers. Business Views help separate the data connections, data access, business elements, and the overall business definition and allow for granular access control for report designers.

BusinessObjects Live Office

Live Office helps business users easily embed accurate, updatable data in Word documents, Excel spreadsheets, and PowerPoint presentations. These resulting Microsoft Office documents can then be securely shared with others using the BusinessObjects Enterprise platform and hosted in corporate portals for collaborative performance management.

Users can now manage their Office documents the same way they manage their other BI content while taking advantage of the BusinessObjects Enterprise advanced security and BI deployment power.

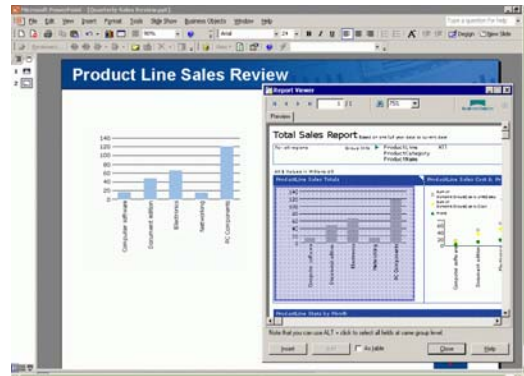


Figure 15: Embed Secure, Refreshable Charts Right Inside PowerPoint

Live Office XI Release 2 deepens integration with the Office system. It allows business users to leverage the dynamic cascading prompts from a Crystal report to filter the embedded data. It is also possible to bind these prompts to specific cells in a Microsoft Excel spreadsheet so they can be refiltered using simple drop-down menus. Within Excel, Live Office also allows for drill down on embedded charts from a Crystal report in order to view the next level of detail.

Live Office XI supports Crystal Reports and Web Intelligence, including report parts.



Crystal Reports

Crystal Reports is the world standard for enterprise reporting; it is a solution that helps rapidly create flexible, feature-rich, high-fidelity reports and tightly integrate them into Web and Windows applications.

Crystal Reports is also embedded within enterprise application software provided by leading vendors, including SAP, Microsoft, PeopleSoft, Siebel, Borland, BEA, and IBM. Over 500 leading independent software vendors have standardized on Crystal Reports as their trusted partner for enterprise reporting.

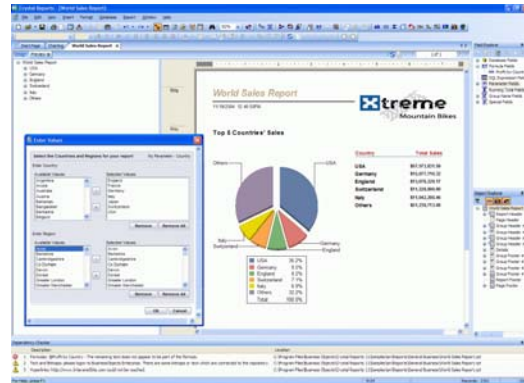


Figure 16: Crystal Reports, the Standard in Enterprise Reporting

BusinessObjects Web Intelligence

In addition to all of the functionality from Web Intelligence 6.5, BusinessObjects Web Intelligence XI includes:

- An all-DHTML environment optimized for consumption, rather than authoring. Letting users walk before they run, the product exposes minimal functionality to new users, but allows more to be turned on as their comfort grows with the interface.
- The ability to see the report metadata – who authored the report, when it was last refreshed and how long it took, and how the report formulas are defined.
- New scheduling from the new BusinessObjects XI platform that allows end users to schedule a report on a regular basis or using a custom “business calendar” that can be tailored to an organization’s fiscal calendar, holiday schedule, or other unique organizational requirements.
- The new BusinessObjects XI platform allows users to hold discussion threads around individual Web Intelligence documents.



Figure 17: On-Report Analysis and the New Context Panel with Information on the Report Metadata



BusinessObjects Web Intelligence XI Release 2 has been enhanced to deliver query authoring power and ease-of-use interactivity features so that organizations can broaden the reach of ad hoc analysis through a zero-client interface. Enhancements include:

- Synchronized multiple data providers, so users can bring together data from two universes into a single table or chart and then explore this information
- Combined queries using the operators Union, Intersect, and Minus
- Access to OLAP data via universes
- Subqueries – allowing users to use the results of a query as a filter for a further query
- Conditional queries based on object-to-object comparison
- Manual editing of the SQL

Additionally, Web Intelligence XI Release 2 provides greatly enhanced report creation capabilities such as:

- Ranking of both query results and report content
- Custom sorting
- Advanced formula language functions

Finally, Web Intelligence XI Release 2 provides the ability to view the ETL metadata from BusinessObjects Data Integrator. This allows users to view the data lineage information such as the source tables where the report data came from and any expression executed to create the final data. This information adds to the existing metadata displayed in the Web Intelligence report to ensure users have the highest confidence in the data that is presented to them.

Performance Management Products

BusinessObjects XI delivers performance management functionality on an integrated platform. In addition to all of the functionality from BusinessObjects 6.5, new features in performance management include:

- Simpler way to create and share dashboard with other users
- Ability to display Xcelsius, Crystal reports and report parts, Web Intelligence report parts, and Voyager content in dashboards
- Centrally managed security via the central management console
- Change management – an easy two-step migration from development to test to production servers



BusinessObjects XI Release 2 brings increased integration and enhanced ease-of-use across the performance management products. The analytics displayed in dashboards and scorecards have been enhanced to offer a better display of data and visual effects. This adds more interactivity and flexibility in display and formatting options.

Additionally, goal values such as the target or tolerance limit can now be sourced using universe-based queries. Users can reuse not just metrics, but also goal values already being stored in other applications such as Microsoft Excel, or any database that a universe can access.

BusinessObjects XI Release 2 also delivers integration for the performance management products with the most popular enterprise information portals, via the same industry standard portlets as the BI platform.

The existing analytic solutions also benefit from the integrated platform, and can be extended and customized using all content from the platform including Crystal Reports.



Figure 18: Performance Is Easier to Understand at a Glance with New Visualization Techniques in BusinessObjects XI Release 2

NEW FOR USERS OF CRYSTAL V10

Crystal Reports

Crystal Reports XI includes new report authoring enhancements and application development capabilities. New features include:

- Dynamic cascading prompts (parameter driven)
- Tighter integration with Business Views and universe metadata
- Fully updated look-and-feel, including a new XP-like interface



Crystal Reports XI Release 2 brings new enhancements in two main areas:

- Easier navigation with advanced search in the HTML preview tab throughout all pages of a report including any visible sub reports
- Increased productivity with features like improved drag-and-drop capabilities onto and within a report

BusinessObjects Enterprise

Universes

The patented Business Objects semantic layer is the foundation for empowering end-user query and analysis. It abstracts the complexity of data by using business language rather than data language to access, manipulate, and organize data. The business language is stored in objects in a Business Objects universe. Both Web Intelligence and Crystal Reports can access universes using the Business Objects universe query panel, which allows users to drag and drop fields, measures, and dimensions straight onto the report.

All universe objects and connections are stored and secured in the CMC, requiring a user to log in to BusinessObjects Enterprise to use Universe Designer.

BusinessObjects Web Intelligence

Web Intelligence is a Web-based query and analysis tool designed to provide insight to the maximum number of users via an easy-to-use environment and highly scalable platform.

It provides business users with a powerful WYSIWIG report creation environment, flexible drill down techniques, and simple ability to customize (without programming). Casual users and report consumers benefit from an easy-to-use interface that provides step-by-step query creation, on-report analysis, and effortless save to Microsoft Excel and Adobe Acrobat PDF formats with a zero-footprint product.

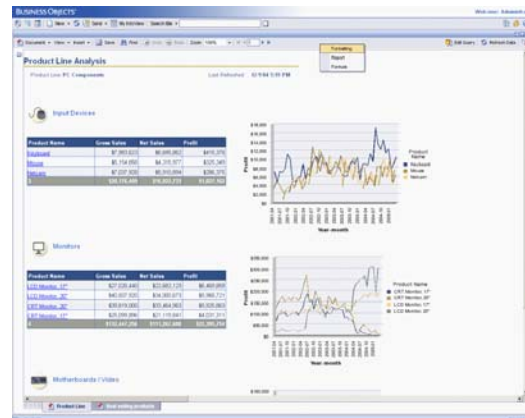


Figure 19: Query and Analysis for Business Users with Web Intelligence

BusinessObjects Dashboard Builder

BusinessObjects Dashboard Builder is a new product that offers dashboard layout and interactive visual analytic capabilities to help organizations get a quick view of their business performance. It is based on our previous Dashboard Manager product, but without the metrics engine, rules engine, or alerting capabilities.

Dashboard Builder provides organizations with visibility into their critical business activities through an easy-to-use and build dashboard interface. It offers:

- Drag-and-drop dashboard creation
- Universe-based analytics for display inside dashboards
- The ability to integrate reports and report parts from Crystal Reports and Web Intelligence, as well as Voyager and Xcelsius
- Flexible templates to provide extreme insight into the business

BusinessObjects Performance Manager

BusinessObjects Performance Manager helps organizations focus on key performance metrics and transform information into a strategic asset by providing goal management, scorecards, strategy maps, and recommended actions. Organizations can align their day-to-day decisions

with high-level initiatives through scorecards that show how a user's goals align with those initiatives.

Analytic Engines

The powerful analytic engines are designed to enhance your dashboards and scorecards to provide more insight. They further deepen the analysis capabilities of the rest of our performance management products. The engines are:

- Set Analysis
- Predictive Analysis
- Process Analysis

The analytic engines are available as add-ons to BusinessObjects Dashboard Builder and BusinessObjects Performance Manager, with some of the capabilities being incorporated into the performance management applications.

Performance Management Applications

Performance management applications represent the next generation of BI. They consist of domain-focused business metrics, prebuilt dashboards and scorecards, and best-practice analysis techniques for gaining insights. Applications can also provide managers with a framework for business analysis. In addition, entire organizations can benefit from the management of disparate data sources using a data warehouse, as well as unprecedented flexibility to implement and customize prepackaged analytics. BusinessObjects XI includes analytic solutions from the set of performance management applications.



SERVICES AVAILABLE FOR BUSINESSOBJECTS XI RELEASE 2

Education Services

In addition to updating our training offerings around specific products (for example, BusinessObjects Knowledge Accelerator – Web Intelligence and our classroom training), we have created a number of training offerings specifically to help you move up to the BusinessObjects XI Release 2 platform. These include the following:

- Understanding the BusinessObjects XI Release 2 Platform
- Essentials of Migrating to BusinessObjects XI Release 2
- Migrating from BusinessObjects 5x/6x to BusinessObjects XI Release 2

Furthermore, we have a number of detailed courses to help administrators and designers make the most of the BusinessObjects XI Release 2 platform.

Consulting Services

For customers moving to BusinessObjects XI Release 2, we have two specific offerings to aid migration to, and make the most of, the new platform. First, we have our Migration Assessment Workshop, where we work with key stakeholders in your organization to map out the project plan and impact of moving to BusinessObjects XI. Following the Migration Workshop, our Migration Services carry out the full technical migration as well as the technical education required for the administrators within your organization.

Extended Support During Migrations with 7-Day Project Support

Migrations are typically planned outside of business hours in order to minimize the impact on the business impact. For customers who do not have a 24-hour support program, Business Objects offers "7-Day Project Support," a program to help you through the transition.

7-Day Project Support allows you to expand your Standard Support offering by purchasing 24/7 emergency support for seven days – without having to incur the cost of upgrading to a higher level of support. Extending your support outside of business hours gives you a safety net, ensuring your severity one issues are addressed around-the-clock during your short-term critical project.

Learn more about 7-Day Project Support here:

http://support.businessobjects.com/programs_and_lifecycle/programs/support_addons.asp.

For more information contact your account manager or contact us via our Website

www.businessobjects.com.

businessobjects.com



© 2008 Business Objects. All rights reserved. Business Objects owns the following U.S. patents, which may cover products that are offered and licensed by Business Objects: 5,555,403; 5,857,205; 6,289,352; 6,247,008; 6,490,593; 6,578,027; 6,831,668; 6,768,986; 6,772,409; 6,882,998; 7,139,766; 7,299,419; 7,194,465; 7,222,130; 7,181,440 and 7,181,435. Business Objects and the Business Objects logo, BusinessObjects, Business Objects Crystal Vision, Business Process On Demand, BusinessQuery, Crystal Analysis, Crystal Applications, Crystal Decisions, Crystal Enterprise, Crystal Insider, Crystal Reports, Desktop Intelligence, Inxight, the Inxight Logo, LinguistX, Star Tree, Table Lens, ThingFinder, Timewall, Let there be light, Metify, NSite, Rapid Marts, RapidMarts, the Spectrum Design, Web Intelligence, Workmail and Xcelsius are trademarks or registered trademarks in the United States and/or other countries of Business Objects and/or affiliated companies. All other names mentioned herein may be trademarks of their respective owners. Part # WS024-C