

### Simplified Data Access

- Insulate report designers from raw data sources
- Easily combine multiple data sources into a single report design

### Granular Data-level Security

- Meet complex data security requirements

### Change Management

- Facilitate report maintenance
- Simplify report migration

### Speed Report Design and Maintenance Cycles

Crystal Enterprise™ Business Views helps you better manage reporting across multiple data sources and applications by simplifying data access, change management, and data-level security processes. An optional service in Crystal Enterprise, Business Views allow you to integrate data from disparate sources, handle promotion/ demotion between development and production environments, and control security at both the row and column level.

### Simplified Data Access

Data access is one of the most fundamental, yet difficult aspects of designing a report. Locating the right data, joining tables appropriately, and filtering the data to focus on a specific subject area requires an in-depth knowledge of the underlying data structures.

The Business View Manager allows you to simplify data access for your report designers by insulating them from the raw data structures. You can build connections to multiple data sources, join tables, alias field names, create calculated fields, and then surface this simplified structure as a Business View in Crystal Enterprise. Your report designers can then connect to Crystal Enterprise and use the Business View as the basis for their report, rather than accessing the data directly and building their own queries.

Business Views helps administrators pull data together from disparate sources. Data Connections (created visually or with complex SQL statements) can be integrated into a Data Foundation. Once the Data Foundation is built, Business Elements (a collection of related fields from the Data Foundation) can be created and combined into a Business View.

The modular architecture of Business Views also allows you to readily re-use various components of one Business View to build other Business Views. A single, broad data foundation can serve as the basis for multiple, specialized Business Views. Used carefully, these capabilities allow you to minimize the number of changes required to introduce new data, fields, or formulas into your system.

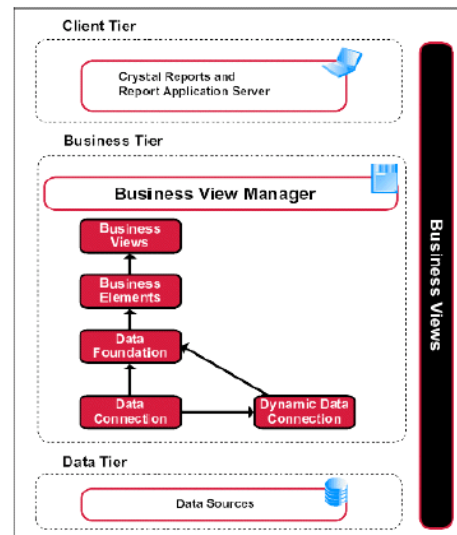


Figure 1. You can insulate users from raw data sources by using the Business View Manager to package data up for report designers.

# Crystal Enterprise Business Views

## Speed Report Design and Maintenance Cycles

### Granular Data-level Security

Many reporting scenarios involve complex security requirements. Each user is entitled to see a slightly different slice of corporate data, based on their business unit or level of seniority (e.g., telephone billing statement or regional sales pipeline report).

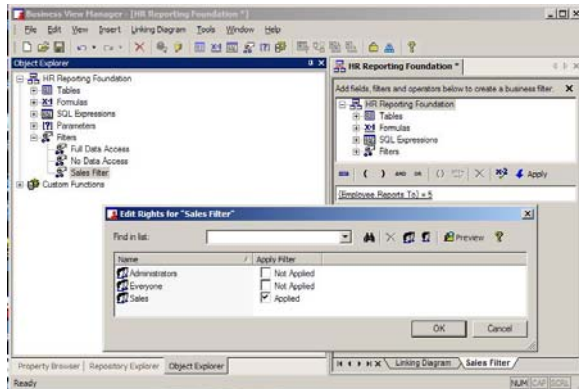


Figure 2: The Business View Manager provides a graphical interface for building filters and applying row and column level security.

Rather than creating a number of different reports to meet this need, you can create a single report and use the security features of Business Views to filter data appropriately for each user. Using the Business View Manager, you can set up row- or column-level filters and map these filters to users or user groups stored in your existing LDAP, Active Directory, or Windows authentication

provider. This security is then consistently applied at the data level, ensuring that any report design based on a Business View will respect the underlying data security.

You can then choose to schedule the report to run regularly. Or you can allow users to refresh it on demand. Regardless, Crystal Enterprise can generate a master instance of the report (with all the data included if you run the report under an administrator context) and then filter the report every time a user views it. All exporting, printing, and report modification requests will also return only the data the user is entitled to see.

### Change Management and Re-use

Maintaining a large set of reports is often more time-consuming and complex than new development. Activities such as making small changes in response to user needs, updating business calculations, changing formatting, and moving your reports between development and production data sources all delay you from addressing new requirements.

Business Views includes two key features to help you spend less time on report maintenance. First, you can use Dynamic Data Connections to store connections to multiple instances of the same database (e.g., development, test, and production). By passing a parameter when you're designing (or scheduling) the report, you can select which data source the report runs against. Second, you can store commonly-used functions, text objects, and logos directly in your data foundation. This allows you to easily roll changes across multiple reports by changing the object once.

► [www.businessobjects.com](http://www.businessobjects.com)

Americas Tel: +1 800 527 0580 Europe Tel: +33 1 41 25 21 21 Asia-Pacific Tel: +65 887 4228 Japan Tel: +81 3 5720 3570



The Business Objects product and technology are protected by US patent numbers 5,555,403; 6,247,008; 6,578,027; 6,490,593; and 6,289,352. The Business Objects logo, the Business Objects tagline, BusinessObjects, BusinessObjects Broadcast Agent, BusinessQuery, Crystal Analysis, Crystal Analysis Holos, Crystal Applications, Crystal Enterprise, Crystal Info, Crystal Reports, Rapid Mart, and WebIntelligence are trademarks or registered trademarks of Business Objects SA in the United States and/or other countries. Various product and service names referenced herein may be trademarks of Business Objects SA. All other company, product, or brand names mentioned herein, may be the trademarks of their respective owners. Specifications subject to change without notice. Not responsible for errors or omissions. Copyright © 2003 Business Objects SA. All rights reserved.